

# Standard 3 Practice Quiz C

MA 109

Print Your Name: Solutions ID: \_\_\_\_\_

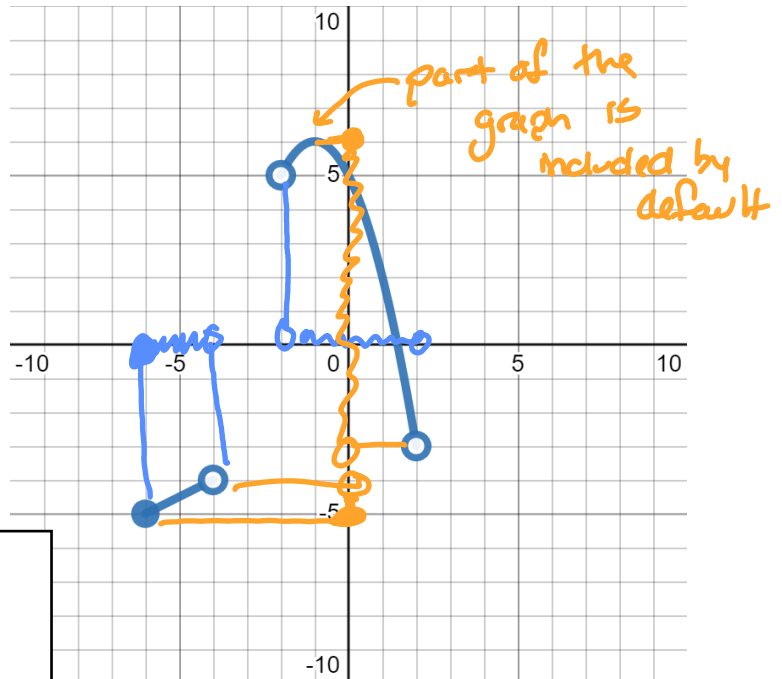
Be sure that the ID number above is your correct 8-digit student ID number (without the leading 9). If this number is incorrect or not legible, it will take longer to process your score on this quiz.

This is practice for an in-class assessments on Standard 3. The only technology allowed during this quiz is a 4-function calculator. No notes or books may be used. This is an individual quiz, so any work done here must be entirely your own work.

**Show all of your work.** Your work will be graded on both accuracy and completeness, and partial credit is possible. You have 20 minutes to take this quiz.

Be sure to complete both the questions on this page and those on the back of this page.

1. Suppose  $g(x)$  is given in the graph to the right.
  - a. What is the domain of  $g(x)$ ? Write your answer using **interval notation** in the box below.



Answer:

$$[-6, -4) \cup (-2, 2)$$

- b. What is the range of  $g(x)$ ? Write your answer using **interval notation** in the box below.

Answer:

$$[-5, -4) \cup (-3, 6]$$

Pay close attention to which graph is which

2. In each graph below, the gray dotted graph is the original,  $f(x)$ . The solid blue graph is the new graph,  $g(x)$ . For each transformation, write a formula  $g(x)$  in terms of  $f(x)$ .

