

Standard 4 Practice Quiz E

MA 109

Print Your Name: Solutions ID: _____

Be sure that the ID number above is your correct 8-digit student ID number (without the leading 9). If this number is incorrect or not legible, it will take longer to process your score on this quiz.

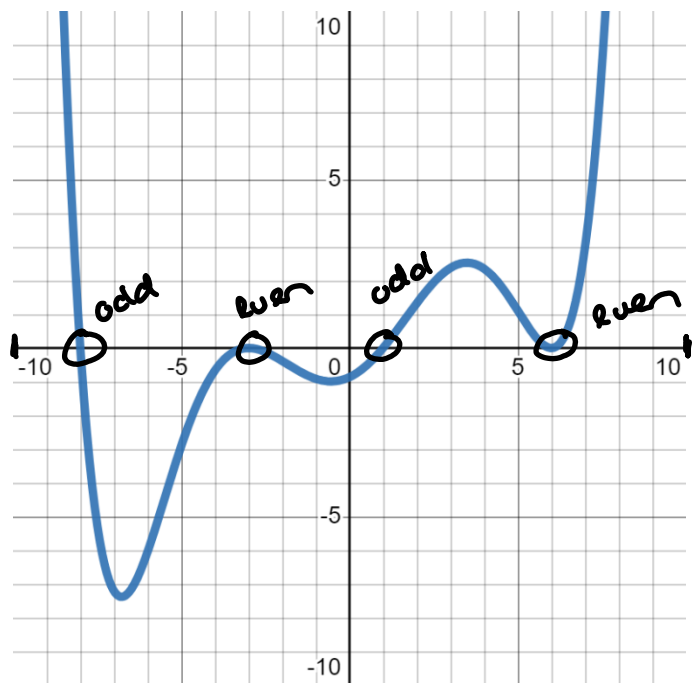
This is practice for an in-class assessments on Standard 4. The only technology allowed during this quiz is a 4-function calculator. No notes or books may be used. This is an individual quiz, so any work done here must be entirely your own work.

Show all of your work. Your work will be graded on both accuracy and completeness, and partial credit is possible. You have 20 minutes to take this quiz.

Be sure to complete both the questions on this page and those on the back of this page.

1. Suppose the polynomial $p(x)$ is graphed below. Use this graph to complete the table by listing all of the roots and their multiplicities. Assume that all roots are shown in the picture.

Root	Multiplicity
-8	odd
-3	even
1	odd
6	even



multiplicity on graphs:

through axis \rightarrow odd multiplicity
bounces off axis \rightarrow even multiplicity

↙ where $y=0$

2. Find the x-intercept(s) of the rational function $f(x) = \frac{2x-6}{x+7}$. Show all of your work, and write your answer as **ordered pair(s)** in the answer box below.

$$(x+7) \cdot 0 = \frac{2x-6}{x+7} (x+7)$$

$$0(x+7) = 2x-6$$

$$0 = 2x-6$$

$$+6 \quad +6$$

$$\frac{6}{2} = \frac{2x}{2}$$

$$3 = x$$

Answer:

$(3, 0)$

3. Which of the following functions have horizontal asymptotes? Select all that apply.

$f(x) = \frac{7x^3 - 3x + 1}{2x^5 + x - 1}$

$$\frac{7x^3}{2x^5} = \frac{7}{2x^2} \rightarrow 0$$

$f(x) = \frac{7x^5 - 6x + 1}{2x^5 + x - 1}$

$$\frac{7x^5}{2x^5} = \frac{7}{2}$$

$f(x) = \frac{5x^8 - 3x + 1}{2x^5 + x - 1}$

$$\frac{5x^8}{2x^5} = \frac{5x^3}{2} \text{ no HA}$$

$f(x) = 8x^4 - 2x + 3$

$f(x) = -2x^3 - 7x^2 - x + 5$

} polynomials never have HA's