

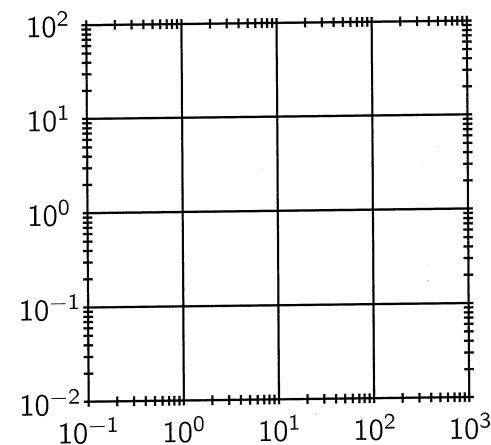
MA137 – Calculus 1 with Life Science Applications Semilog and Double Log Plots (Section 1.4)

Department of Mathematics
University of Kentucky

1/10

Double-log (or Log-Log) Plots

- If we use logarithmic scales on both the horizontal and vertical axes, the resulting graph is called a log-log plot.



2/10

Lines in Double-Log Plots

- A log-log plot is used when we suspect that a power function might be a good model for our data.
- Recall that power functions are frequently found in “scaling relations” between biological variables (e.g., organ sizes). Finding such relationships is the objective of **allometry**.
- If we start with a **power function** $y = Cx^p$ and take logarithms of both sides, we get

$$\log y = \log(Cx^p) = \log C + \log x^p$$

$$\log y = \log C + p \log x$$

Let $Y = \log y$, $A = \log C$, and $X = \log x$. Then the latter equation becomes

$$Y = A + pX$$

We recognize that Y is a linear function of X , so the points $(\log x, \log y)$ lie on a straight line.

3/10

Conversely, suppose we have a straight line in a log-log plot:

$$Y = pX + B$$

when

$$Y = \log y$$

$$X = \log x$$

Hence we have

$$\log y = p \log x + B$$

$$\iff$$

trick!

$$\log y = \log(x^p) + \log(10^B)$$

$$\iff$$

$$\log y = \log(10^B \cdot x^p)$$

$$\iff$$

$$y = 10^B \cdot x^p$$

set $C = 10^B$.

$$\rightarrow \text{to get } y = Cx^p$$

Example 1:

When $\log y$ is graphed as a function of $\log x$, a straight line results. Graph the straight line given by the following two points

$$(x_1, y_1) = (2, 5) \quad (x_2, y_2) = (5, 2)$$

on a log-log plot. determine the functional relationship between x and y . (**Note:** The original x - y coordinates are given.)

1st method:

A line in a log-log plot corresponds to a power relation of the form: $y = Cx^p$.

Since $(2, 5)$ and $(5, 2)$ satisfy this relation we obtain:

$$5 = C 2^p \quad \text{and} \quad 2 = C 5^p$$

Thus $\frac{5}{2^p} = C = \frac{2}{5^p}$. This implies

$$\frac{5^p}{2^p} = \frac{2}{5} \quad \text{or} \quad \left(\frac{5}{2}\right)^p = \frac{2}{5}$$

Take \log of both sides and we get

$$\log \left[\left(\frac{5}{2}\right)^p \right] = \log \left(\frac{2}{5} \right) \rightsquigarrow p \log(2.5) = \log(0.4)$$

$$\Rightarrow p = \frac{\log(0.4)}{\log(2.5)} = \boxed{-1} \quad \Rightarrow C = \frac{5}{2^{(-1)}} = \boxed{10}$$

4/10

Thus the functional relationship is $\boxed{y = \frac{10}{x}}$

2nd method:

$$m = \text{slope} = \frac{\log 5 - \log 2}{\log 2 - \log 5} = \frac{\log(5/2)}{\log(2/5)} = \boxed{-1}$$

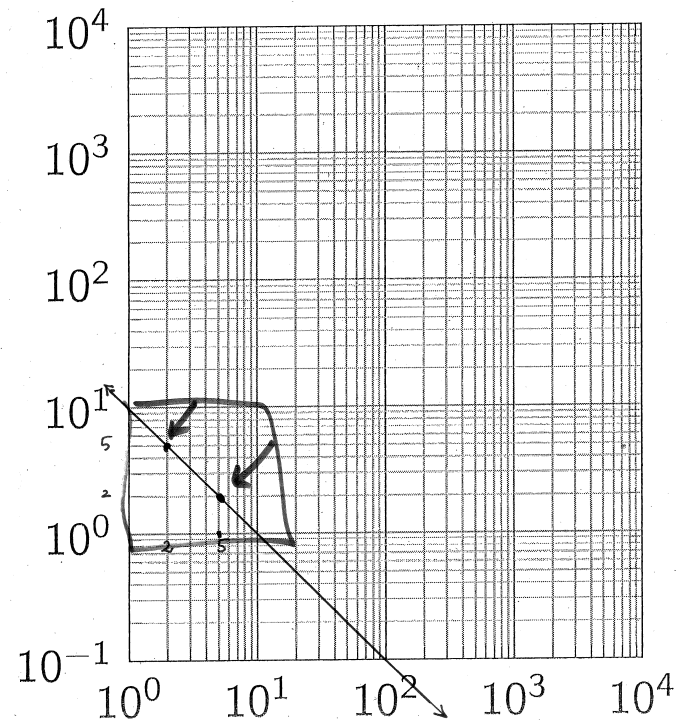
Hence the equation in point slope form is:

$$\left(\log y - \log 2 \right) = -1 \left(\log x - \log 5 \right)$$

$$\Rightarrow \log \left(\frac{y}{2} \right) = - \left(\log \left(\frac{x}{5} \right) \right)$$

$$\Rightarrow \log \left(\frac{y}{2} \right) = \log \left[\left(\frac{x}{5} \right)^{-1} \right] = \log \left(\frac{5}{x} \right)$$

$$\Rightarrow \frac{y}{2} = \frac{5}{x} \quad \Rightarrow \quad \boxed{y = \frac{10}{x}}$$



$$y = \frac{10}{x}$$

$$= 10x^{-1}$$

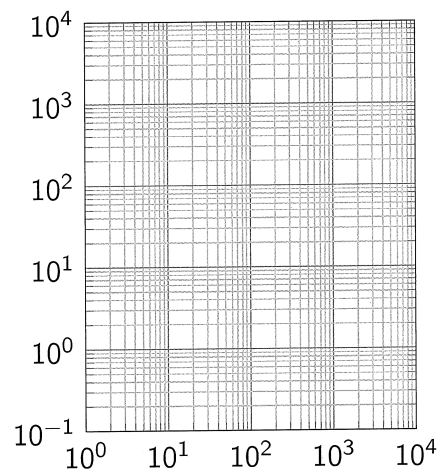
hyperbola

Example 2: (Exam 1, Fall 13, # 4)

There are several possible functional relationships between height and diameter of a tree. One particularly simple model is given by

$$H = AD^{3/4}$$

where A is a constant that depends on the species of tree, H is the height, and D is the diameter. If $A = 50$ plot this relationship in the double log plot below.



Is your graph a straight line? If so, what is its slope?

5/10

Consider the function $H = 50 D^{3/4}$

We can construct the following table of values

D	$H = 50 D^{3/4}$
1	50
10	281.17
10^2	1,581.14
10^3	8,891.4
10^4	50,000 = $5 \cdot 10^4$

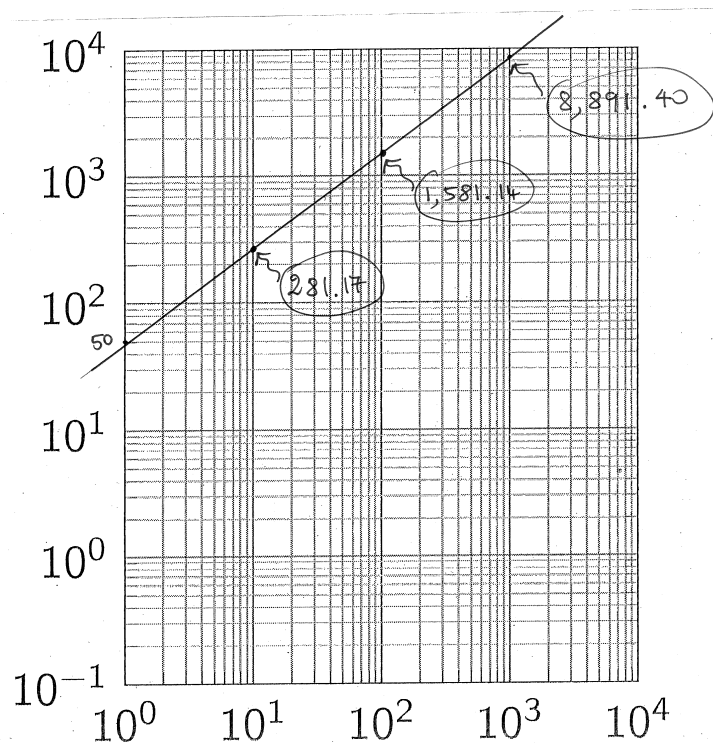
In a log-log plot this power relationship becomes a straight line:

$$\log H = \log(50 D^{3/4})$$

$$\log H = \log 50 + \log(D^{3/4})$$

$$\log(H) = \frac{3}{4} \log(D) + \log(50)$$

slope is $\boxed{\frac{3}{4}}$



Example 3:

The following table is based on a functional relationship between x and y that is either an exponential or a power function:

x	y
0.5	7.81
1	3.4
1.5	2.09
2	1.48
2.5	1.13

Use an appropriate logarithmic transformation and a graph to decide whether the table comes from a power function or an exponential function, and find the functional relationship between x and y .

6/10

<http://www.ms.uky.edu/~ma137>

Lecture 5

First, let's see if there is an exponential relationship among our data points. This means that in the semi-log plot we have a straight line.

x	y	$\log y$
→ 0.5	7.81	0.893
1	3.4	0.531
→ 1.5	2.09	0.32
2	1.48	0.17
→ 2.5	1.13	0.053

Let's compute the slope of the line between two pairs of points of the form $(x, \log y)$

$$\rightarrow (0.5, 0.893) \ \& \ (1.5, 0.32) \rightarrow \text{slope } m = \frac{0.32 - 0.893}{1} \cong -0.573$$

$$\rightarrow (1.5, 0.32) \ \& \ (2.5, 0.053) \rightarrow \text{slope } m = \frac{0.053 - 0.32}{1} \cong -0.267$$

Since we do not get similar values, these points do not lie on a straight line.

Let's see if the points of the form $(\log x, \log y)$ lie on a straight line in a log-log plot:

$\log x$	$\log y$
-0.301	0.893
0	0.531
0.176	0.32
0.301	0.17
0.398	0.053

Pick: $(-0.301, 0.893) \ \& \ (0.176, 0.32)$

$$\text{slope} = \frac{0.32 - 0.893}{0.176 - (-0.301)} \cong -1.201$$

Pick: $(0, 0.531) \ \& \ (0.398, 0.053)$

$$\text{slope} = \frac{0.053 - 0.531}{0.398 - 0} \cong -1.201$$

it seems that we can choose as a slope -1.20

The equation of the line in point slope form is (we choose the simplest point $(0, 0.531)$)

$$(\log y - 0.531) = -1.2 (\log x - 0)$$

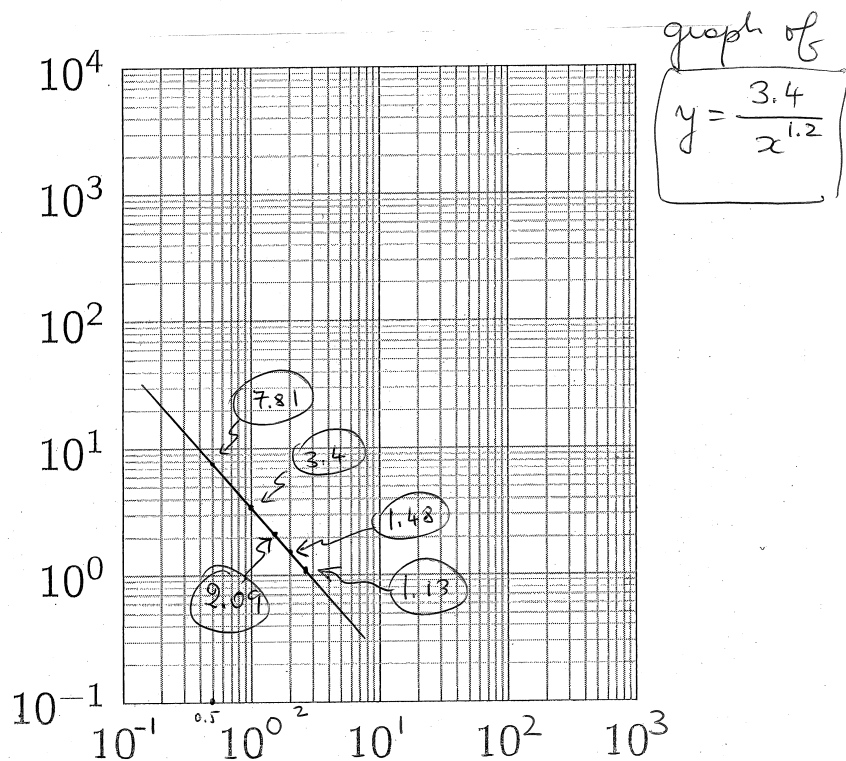
$$\log y - \log 10^{0.531} = -1.2 \log x$$

$$\iff$$

$$\log \left(\frac{y}{10^{0.531}} \right) = \log x^{-1.2} \iff \frac{y}{10^{0.531}} = x^{-1.2}$$

$$\therefore y = 10^{0.531} x^{-1.2} \quad \text{OR}$$

$$y = \frac{3.4}{x^{1.2}}$$



Example 4 (Forgetting):

Ebbinghaus's Law of Forgetting states that if a task is learned at a performance level P_0 , then after a time interval t the performance level P satisfies

$$\log P = \log P_0 - c \log(t + 1),$$

where c is a constant that depends on the type of task and t is measured in months.

- (a) Solve the equation for P .
- (b) Use Ebbinghaus's Law of Forgetting to estimate a student's score on a biology test two years after he got a score of 80 on a test covering the same material. Assume $c = 0.3$.

(a) $\log P = \log P_0 - c \log(t+1)$

We want to solve for P :

$$\log P = \log P_0 - \log[(t+1)^c]$$

\Leftrightarrow

$$\log P = \log \left[\frac{P_0}{(t+1)^c} \right]$$

Hence $10^{\log P} = 10^{\log \left[\frac{P_0}{(t+1)^c} \right]}$

$$\Rightarrow \boxed{P(t) = \frac{P_0}{(t+1)^c}}$$

(b) With our data $P_0 = 80$ $c = 0.3$

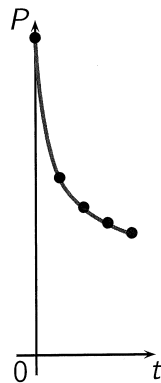
$$P(t) = \frac{80}{(t+1)^{0.3}} \quad \text{hence} \quad P(24) = \frac{80}{(24+1)^{0.3}} \approx \underline{\underline{30.46}}$$

2 years in months

Comment (about Example 4)

Below is the graph of the function $P = 80/(t+1)^{0.3}$ in standard coordinates:

t	$P = 80/(t+1)^{0.3}$
0	80
6	44.62
12	37.06
18	33.072
24	30.458

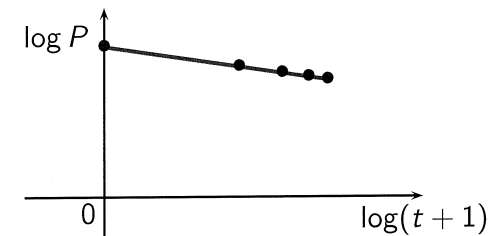


8/10

Comment (cont.d)

Below is the graph of $\log P = \log 80 - 0.3 \log(t+1)$ in a log-log plot:

t	$\log(t+1)$	$\log P = \log 80 - 0.3 \log(t+1)$
0	0	1.903
6	0.845	1.650
12	1.114	1.569
18	1.279	1.519
24	1.398	1.484



9/10

Example 5 (Biodiversity):

Some biologists model the number of species S in a fixed area A (such as an island) by the **Species-Area relationship**

$$\log S = \log c + k \log A,$$

where c and k are positive constants that depend on the type of species and habitat.

- Solve the equation for S .
- Use part (a) to show that if $k = 3$ then doubling the area increases the number of species eightfold.

10/10

$$(a) \quad \log S = \log c + k \log A$$

$$\Leftrightarrow \log S = \log c + \log [A^k]$$

$$\Leftrightarrow \log S = \log [c A^k]$$

$$\Leftrightarrow 10^{\log S} = 10^{\log [c A^k]} \Leftrightarrow \boxed{S = c A^k}$$

$$(b) \quad \text{Suppose } k=3, \text{ i.e. } \underline{S = c A^3}$$

For $A = a_0$ we get that $S(a_0) = c a_0^3$.

However if we double the area, i.e. $A = 2a_0$, we get $S(2a_0) = c (2a_0)^3 = 8 \underline{c a_0^3} = 8 S(a_0)$

i.e. doubling the area increases the number of species eightfold.