

MA 137 — Calculus 1 with Life Science Applications

Derivatives of Trigonometric Functions

(Section 4.8)

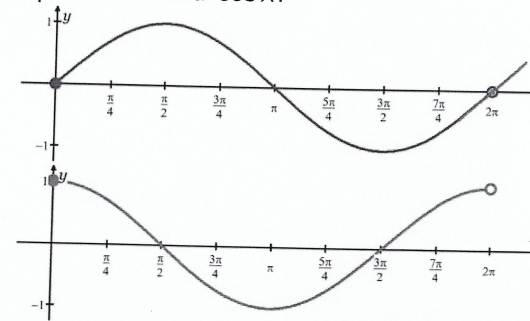
Department of Mathematics
University of Kentucky

Cyclic phenomena are most easily modeled by sines and cosines:

- length of day;
- length of season;
- some population models (e.g. ideal predator-prey models).

We need to know how fast they change.

Let's compare $\sin x$ and $\cos x$:



The Derivative of Sine and Cosine

Theorem

The functions $\sin x$ and $\cos x$ are differentiable for all x , and

$$\frac{d}{dx} \sin x = \cos x \quad \text{and} \quad \frac{d}{dx} \cos x = -\sin x$$

We need the trigonometric limits from Section 3.4 to compute the derivatives of the sine and cosine functions. Namely,

$$\lim_{h \rightarrow 0} \frac{\sin h}{h} = 1 \quad \text{and} \quad \lim_{h \rightarrow 0} \frac{\cos h - 1}{h} = 0.$$

We also need the addition formulas for sine and cosine

$$\cos(\alpha + \beta) = \cos \alpha \cos \beta - \sin \alpha \sin \beta \quad \sin(\alpha + \beta) = \sin \alpha \cos \beta + \cos \alpha \sin \beta.$$

Note that all angles are measured in radians.

Proof for Cosine

We use the formal definition of derivatives:

$$\begin{aligned} \frac{d}{dx} \cos x &\stackrel{\text{def}}{=} \lim_{h \rightarrow 0} \frac{\cos(x+h) - \cos x}{h} \\ &\stackrel{\text{add. form.}}{=} \lim_{h \rightarrow 0} \frac{\cos x \cos h - \sin x \sin h - \cos x}{h} \\ &= \lim_{h \rightarrow 0} \frac{\cos x (\cos h - 1) - \sin x \sin h}{h} \\ &= \lim_{h \rightarrow 0} \left[\cos x \frac{\cos h - 1}{h} - \sin x \frac{\sin h}{h} \right] \\ &\stackrel{\text{laws}}{=} \cos x \lim_{h \rightarrow 0} \frac{\cos h - 1}{h} - \sin x \lim_{h \rightarrow 0} \frac{\sin h}{h} \\ &\stackrel{\text{fund. lim.}}{=} \cos x \cdot 0 - \sin x \cdot 1 \\ &= -\sin x \end{aligned}$$

Proof for Sine

We use the formal definition of derivatives:

$$\begin{aligned}
 \frac{d}{dx} \sin x &\stackrel{\text{def}}{=} \lim_{h \rightarrow 0} \frac{\sin(x+h) - \sin x}{h} \\
 &\stackrel{\text{add. form.}}{=} \lim_{h \rightarrow 0} \frac{\sin x \cos h + \cos x \sin h - \sin x}{h} \\
 &= \lim_{h \rightarrow 0} \frac{\sin x (\cos h - 1) + \cos x \sin h}{h} \\
 &= \lim_{h \rightarrow 0} \left[\sin x \frac{\cos h - 1}{h} + \cos x \frac{\sin h}{h} \right] \\
 &\stackrel{\text{laws}}{=} \sin x \lim_{h \rightarrow 0} \frac{\cos h - 1}{h} + \cos x \lim_{h \rightarrow 0} \frac{\sin h}{h} \\
 &\stackrel{\text{fund. lim.}}{=} \sin x \cdot 0 + \cos x \cdot 1 \\
 &= \cos x
 \end{aligned}$$

Derivatives of Remaining Trigonometric Functions

The derivatives of the other trigonometric functions can be found using the following identities and the quotient rule:

$$\begin{aligned}
 \tan x &= \frac{\sin x}{\cos x} & \cot x &= \frac{\cos x}{\sin x} \\
 \sec x &= \frac{1}{\cos x} & \csc x &= \frac{1}{\sin x}
 \end{aligned}$$

For example: $\frac{d}{dx}(\tan x) = \dots = \sec^2 x = 1 + \tan^2 x$.

Example 1: (Online Homework HW15, # 3)

Find the equation of the tangent line to the curve $y = 6x \cos x$ at the point $(\pi, -6\pi)$.

$$y = 6x \cos x$$

We want the equation of the tangent line at

$$P(\pi, -6\pi) \quad \text{Notice } y(\pi) = 6 \cdot \pi \cdot \underbrace{\cos(\pi)}_{-1} = -6\pi \quad \checkmark$$

We need the derivative evaluated at $x = \pi$:

$$\begin{aligned}
 y' &= 6 \cdot 1 \cdot \cos x + 6x \cdot (-\sin x) \\
 &= 6 \cos x - 6x \sin x
 \end{aligned}$$

$$y'|_{x=\pi} = 6 \cdot \underbrace{\cos \pi}_{-1} - 6\pi \underbrace{\sin(\pi)}_{=0} = \boxed{-6}$$

$$\text{Hence } \boxed{y - (-6\pi) = -6(x - \pi)} \quad || \text{ll}$$

$$\underline{\text{OR}} \quad y = -6x + 6\pi - (-6\pi) \quad \therefore \boxed{y = -6x}$$

Example 2: (Online Homework HW15, # 4)(a) Let $f(x) = \sin^3(x)$. Find $f'(x)$.(b) Let $g(x) = \sin(x^3)$. Find $g'(x)$.

$$(a) \quad f(x) = \sin^3(x) = [\sin(x)]^3 \quad \text{that's the meaning}$$

So, using the power chain rule, we get

$$f'(x) = 3 [\sin(x)]^{3-1} \cdot \cos(x) \\ = \boxed{3 \sin^2(x) \cdot \cos(x)} \quad \text{ll}$$

$$(b) \quad g(x) = \sin(x^3)$$

Using the chain rule we get

$$g'(x) = \cos(x^3) \cdot \underbrace{3x^2} \\ = \boxed{3x^2 \cos(x^3)} \quad \text{ll}$$

Example 3: (Online Homework HW15, # 7)

Find the derivative of the following function:

$$f(x) = \frac{\cos(2x)}{6 - \sin(2x)}$$

$$f(x) = \frac{\cos(2x)}{6 - \sin(2x)}$$

$$f'(x) = \frac{(\cos(2x))' \cdot (6 - \sin(2x)) - \cos(2x) (6 - \sin(2x))'}{[6 - \sin(2x)]^2}$$

$$= \frac{-\sin(2x) \cdot 2(6 - \sin(2x)) - \cos(2x) \cdot [-\cos(2x) \cdot 2]}{[6 - \sin(2x)]^2}$$

$$= \frac{-12 \sin(2x) + \underbrace{2 \sin^2(2x) + 2 \cos^2(2x)}_{=2}}{[6 - \sin(2x)]^2}$$

$$= \boxed{\frac{2 - 12 \sin(2x)}{[6 - \sin(2x)]^2}} \quad \text{lll}$$

Example 4: (Online Homework HW15, # 8)

Find the derivative of the following function:

$$f(x) = (x^3 - \cos(6x^2))^5$$

$$f(x) = [x^3 - \cos(6x^2)]^5$$

We need to use the chain rule to find $f'(x)$:

$$\begin{aligned} f'(x) &= 5 [x^3 - \cos(6x^2)]^{5-1} \cdot (x^3 - \cos(6x^2))' \\ &= 5 [x^3 - \cos(6x^2)]^4 \cdot (3x^2 - (-\sin(6x^2) \cdot 12x)) \\ &= \boxed{5 [x^3 - \cos(6x^2)]^4 \cdot (3x^2 + 12x \sin(6x^2))} \end{aligned}$$

Example 5:

Human heart goes through cycles of contraction and relaxation (called systoles). During cycles, blood pressure goes up and down repeatedly; as heart contracts, pressure rises, and as heart relaxes (for a split second), pressure drops.

Consider approximate function for blood pressure of a patient

$$P(t) = 100 + 20 \cos\left(\frac{\pi t}{35}\right) \text{ mmHg}$$

where t is measured in minutes. Find and interpret $P'(t)$.

$$P(t) = 100 + 20 \cos\left(\frac{\pi t}{35}\right)$$

$$P'(t) = 0 + 20 \cdot \left[-\sin\left(\frac{\pi t}{35}\right) \cdot \frac{\pi}{35}\right]$$

$$= -\frac{20 \cdot \pi}{35} \sin\left(\frac{\pi t}{35}\right)$$

$$= \boxed{-\frac{4\pi}{7} \sin\left(\frac{\pi t}{35}\right)} \text{ mmHg/min}$$

$P'(t)$ is measured in mmHg/min; it is the change in blood pressure due to normal cycle of the heart.

Example 6: (Online Homework HW15, # 9)

During the human female menstrual cycle, the gonadotropin, FSH or follicle stimulating hormone, is released from the pituitary in a sinusoidal manner with a period of approximately 28 days.

Guyton's text on Medical Physiology shows that if we define day 0 ($t = 0$) as the beginning of menstruation, then FSH, $F(t)$, cycles with a high concentration of about 4.4 (relative units) around day 9 and a low concentration of about 1.2 around day 23.

- a. Consider a model of the concentration FSH (in relative units) given by

$$F(t) = A + B \cos(\omega(t - \varphi)),$$

where A, B, ω , and φ (with $0 \leq \varphi \leq 28$) are constants and t is in days. Use the data above to find the four parameters.

If ovulation occurs around day 14, then what is the approximate concentration of FSH at that time?

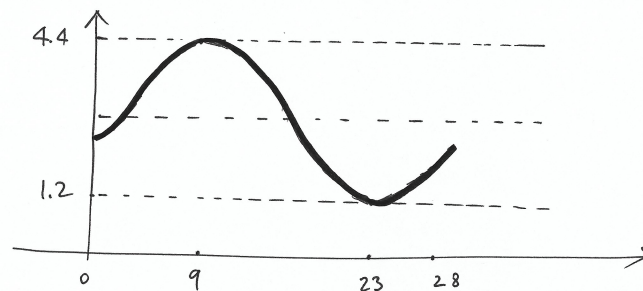
You should sketch a graph of the concentration of FSH over one period.

- b. Find the derivative of $F(t)$. Give its value at the time of ovulation ($t = 14$).

We need to find the correct values in

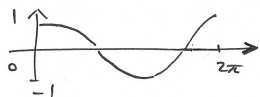
$$F(t) = A + B \cos(\omega(t - \varphi))$$

So that we have a complete cycle in 28 days; the high concentration is around day nine and has value 4.4; the low concentration is around day 23 and has value 1.2.



Here is how the graph should look like!

We need to shift, stretch and translate the graph of $\cos(t)$:



$A =$ gives the vertical shift of the x -axis

$B =$ gives half of the amplitude of the cycle.

A is the middle point between 4.4 and 1.2
 $= 2.8 = \frac{4.4 + 1.2}{2}$

$B = \frac{4.4 - 1.2}{2} =$ half of the amplitude $= 1.6$

the peak that occurs when $t = 0$ for $\cos(t)$ now occurs when $t = 9$. Thus $\varphi = 9$ gives the horizontal shift to the right.

Finally we need to find the frequency " ω ":

Notice that $F(t) = F(t + 28) = F(t + 56) = \dots$
 i.e. the values repeat every 28 days:

Thus: $F(t) = F(t + 28)$ gives

$$A + B \cos(\omega(t - \varphi)) = A + B \cos(\omega(t + 28 - \varphi))$$

$$\cos(\omega(t - \varphi)) = \cos(\omega(t - \varphi) + \omega \cdot 28)$$

Thus $\omega \cdot 28$ must be 2π

$$\therefore \omega = \frac{2\pi}{28} \approx 0.2244$$

Hence $F(t) = 2.8 + 1.6 \cos(0.2244(t-9))$

$$\begin{aligned} \text{(b)} \quad F'(t) &= 1.6 \left[-\sin(0.2244(t-9)) \cdot (0.2244) \right] \\ &= -0.3590 \sin(0.2244(t-9)) \end{aligned}$$

$$\begin{aligned} F'(14) &= -0.3590 \cdot \sin(1.122) \\ &\cong -0.32345 \end{aligned}$$

$$F(14) = 2.8 + 1.6 \cos(1.122) \cong \underline{\underline{3.49421}}$$